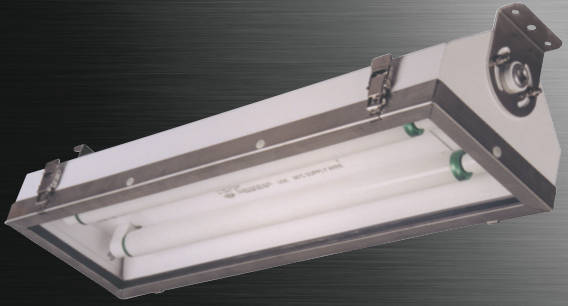


Haz

HazMax Radia/al



FEATURES

- Fluorescent system provides energy savings up to 50% when compared to HID.
- Multi voltage electronic ballast resistant to brownouts or voltage and frequency fluctuations.
- Field replaceable stainless steel lens frame and latches.
- Flat or drop style lens versions with wide beam lumen dispersions of 140 to over 180 degrees.
- Lens frame hinged on side for easy lamp replacement.
- Adjustable mounting brackets allow 110° range of mounting positions.
- Shoc♦Loc™ Bi-Pin spring loaded lamp holders for T5, T8 and T12 lamp types, provide superior resistance to shock and vibration.
- Approved for Class II Group E for atmospheres containing combustible metal dust.
- Standard wall/ceiling mount style can be rotated on longitudinal axis for optimum light positioning.
- Neoprene gasket resists petroleum.
- Optional self contained emergency battery backup ballasts.
- Optional certified test switch on emergency models.
- Optional long life T5 lamps available upon request (consult factory).

APPLICATIONS

- Hazardous locations
- Marine and watertight requirements
- Dusttight requirements
- Grain & sugar milling processing & storage
- Pulp & paper production
- Pharmaceutical & additives formulation & processing
- Coal processing & storage
- Oil and gas exploration and production
- Munitions manufacturing & storage
- Waste water treatment plants
- Petrochemical facilities

APPROVALS

- Class I Division 2 Groups A, B, C & D
- Class I Zone 2 Groups IIA, IIB, IIB+ H2 & IIC
- Class II Division I Groups E, F & G
- Class III
- Type 4
- IP66
- Marine Outside Type Saltwater
- ABS

STANDARDS

- UL 844 - Hazardous Locations
- UL 924 - Emergency Lighting Equipment
- UL 1598A - Luminaires for Marine Vessels
- EN 60529 -Ingress protection
- CSA - Class 3428 83
- CSA - Class 3428 03

TECHNICAL SPECIFICATIONS

HOUSING

.062 inch thick, type 5052H32 aluminum with an electrostatically applied polyester powder coat finish.

LENS

0.125 inch thick, polycarbonate flat lens. Optional tempered glass flat lens or DR acrylic drop lens.

REFLECTOR

Type 5052H32 aluminum with an electrostatically applied white polyester powder coat finish. Minimum 90% reflectance.

GASKET

One piece neoprene.

MOUNTING

Adjustable aluminum surface mount brackets.

LATCHES

Stainless steel positive-locking spring loaded.

LENS FRAME

Type 304 stainless steel, hinged on side.

LAMP HOLDERS

Spring loaded on one end for linear lamp types.

ENTRIES

¼" NPT feed-through outlets, one plugged.

LAMP TYPES

See ORDERING REFERENCES. Lamps not provided.

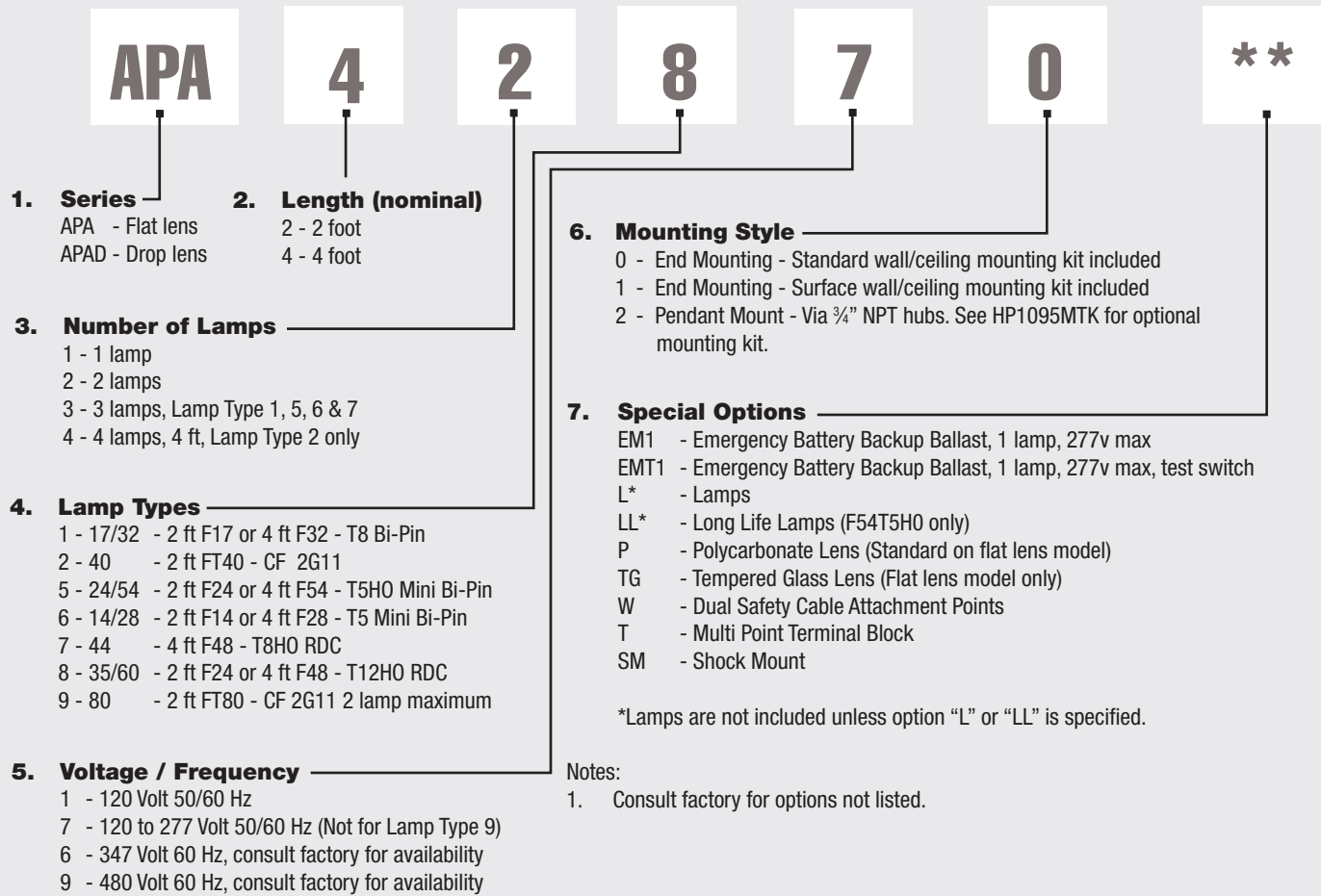
BALLAST

120 to 277 volt 50/60 Hz electronic, optional 347v and 480v.

EMERGENCY BATTERY BACKUP BALLAST

Optional, self contained 90 minute minimum for all lamp types. 120 minutes minimum for F32T8 one lamp. Starting temperature 32°F/0°C.

ORDERING REFERENCES



COMMONLY ORDERED LUMAIRES & CROSS REFERENCE

Part No.	Description	Legacy P/n	Weight	
			Lbs	Kg
APA42870L	Aluminum 4' fixture, flat lens, 2 x F48 120-277v 50/60 Hz	FWFN260A	27.0	12.3
APAD42870L	Aluminum 4' fixture, drop lens, 2 x F48 120-277v 50/60 Hz	FWN260A	27.0	12.3

TEMPERATURE CODES & APPROVALS

Lamp Wattage	Ballast/Socket Type	ANSI Lamp Code	Class I T-Code	Class I Division 2	Class II Division 1	Class III	Class II & III T-Code	Starting Temp	Maximum Ambient*	Supply Wire
17	T8 Bi-Pin G13	F17-T8	T4A	A,B,C & D	E, F & G	Yes	T3C	0°F / -18°C	55°C	90°C
32	T8 Bi-Pin G13	F32-T8	T4A	A,B,C & D	E, F & G	Yes	T3C	-20°F / -29°C	55°C	90°C
40	4 Pin 2G11	FT40-CF	T4A	A,B,C & D	E, F & G	Yes	T3C	0°F / -18°C	55°C	90°C
24/54	T5HO Mini Bi-Pin G5	F24/F54-T5HO	T4	A,B,C & D	E, F & G	Yes	T3C	-20°F / -29°C	55°C	90°C
14/28	T5 Mini Bi-Pin G5	F14/F28-T5	T4	A,B,C & D	E, F & G	Yes	T3C	0°F / -18°C	55°C	90°C
44	T8HO RDC R17d	F48-T8HO	T3C	A,B,C & D	E, F & G	Yes	T3C	-20°F / -29°C	40°C	90°C
35/60	T12HO RDC R17d	F24/F48-T12HO	T3C	A,B,C & D	E, F & G	Yes	T3C	-20°F / -29°C	40°C	90°C
80	4 Pin 2G11	FT80-CF	T4A	A,B,C & D	E, F & G	Yes	T3C	0°F / -18°C	40°C	90°C

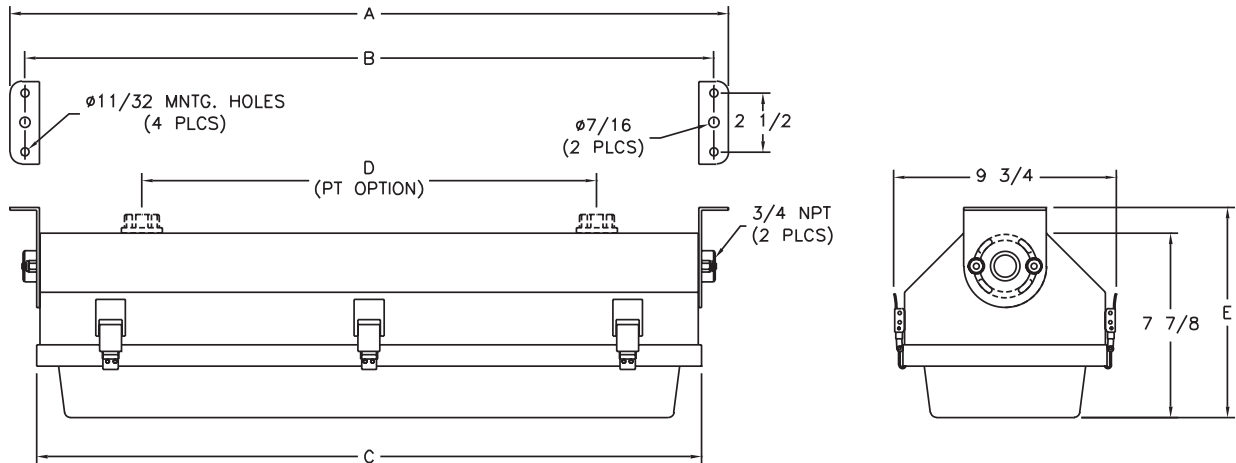
* Consult factory for optional higher ambient models.

HazMax Radia/al

SPARE PARTS

Part No.	Description	Part No.	Description	Part No.	Description
FX5350	BALLAST 120-277V AC 50/60HZ, 1 x 14, F14T5	FX5340	BALLAST 120-277V AC 50/60HZ, 2 x 32, F32T8	FX2135	FLAT LENS, Polycarbonate, 4ft. models
FX5350	BALLAST 120-277V AC 50/60HZ, 1 x 28, F28T5	FX5349	BALLAST 120-277V AC 50/60HZ, 2 x 44, F48T8HO	FX2136	DROP LENS, DR Acrylic, 2ft. models
FX5307	BALLAST 120-277V AC 50/60HZ, 1 x 24, F24T5HO	FX5334	BALLAST 120-277V AC 50/60HZ, 2 x 35, F24T12HO	FX2137	DROP LENS, DR Acrylic, 4ft. models
FX5305	BALLAST 120-277V AC 50/60HZ, 1 x 54, F54T5HO	FX5334	BALLAST 120-277V AC 50/60HZ, 2 x 60, F48T12HO	GKT6088-69.5	GASKET, 2ft. models
FX5174	BALLAST 120-277V AC 50/60HZ, 1 x 17, F17T8	FX5272	BALLAST 120-277V AC 50/60HZ, 2 x 40 CF, FT40 2G11	GKT6088-117.5	GASKET, 4ft. models
FX5221	BALLAST 120-277V AC 50/60HZ, 1 x 32, F32T8	FX5128H DU	EMERGENCY BATTERY BACKUP BALLAST, EM1/EMT1, 120-277v, CF, T8, T8HO, & T12HO	FX7031A	MOUNT, Wall
FX5349	BALLAST 120-277V AC 50/60HZ, 1 x 44, F48T8HO	FX5346H DU	EMERGENCY BATTERY BACKUP BALLAST, EM1/EMT1, 120 or 277v, T5 & T5HO	FX7027A	MOUNT, Standard
FX5334	BALLAST 120-277V AC 50/60HZ, 1 x 35, F24T12HO	FX3573	LAMP, 14w, F14T5	FX7022A	MOUNT, Surface
FX5334	BALLAST 120-277V AC 50/60HZ, 1 x 60, F48T12HO	FX3574	LAMP, 28w, F28T5	FX7023	MOUNT, Pipe Mount Kit
FX5272	BALLAST 120-277V AC 50/60HZ, 1 X 40 CF, FT40 2G11	FX3568	LAMP, 24w, F24T5HO	FX7025	MOUNT, Chain Mount Kit
FX5335	BALLAST 120-277V AC 50/60HZ, 1 x 80, FT80 2G11	FX3567	LAMP, 54w, F54T5HO	FX7004A	MOUNT, Shock Mount
FX5350	BALLAST 120-277V AC 50/60HZ, 2 x 14, F14T5	FX3577	LAMP, 54w, Long Life F54T5HO	FX7028	BEAM CLAMP KIT, Beam clamps (2), Safety Cable & Cable Gland
FX5350	BALLAST 120-277V AC 50/60HZ, 2 x 28, F28T5	FX3528	LAMP, 17w, F17T8	FX4004	LAMP HOLDER, Stationary, 35w, 44w, 60w
FX5307	BALLAST 120-277V AC 50/60HZ, 2 x 24, F24T5HO	FX3527	LAMP, 32w, F32T8	FX4005	LAMP HOLDER, Spring, 35w, 44w, 60w
FX5305	BALLAST 120-277V AC 50/60HZ, 2 X 54, F54T5HO	FX3565	LAMP, 44w, F48T8HO	FX4008	LAMP HOLDER, Stationary, 14w, 17w, 24w, 28w, 32w, 54w
FX5340	BALLAST 120-277V AC 50/60HZ, 2 x 17, F17T8	FX3507	LAMP, 35w, F24T12HO	FX4009	LAMP HOLDER, Spring, 14w, 17w, 24w, 28w, 32w, 54w
		FX3505	LAMP, 60w, F48T12HO	FX4043	LAMP HOLDER, Stationary, 40w CF
		FX3533	LAMP, 40w, FT40 2G11	N/A	LAMP HOLDER, Spring, 40w CF
		FX3570	LAMP, 80w, FT80 2G11		
		FX2134	FLAT LENS, Polycarbonate, 2ft. models		

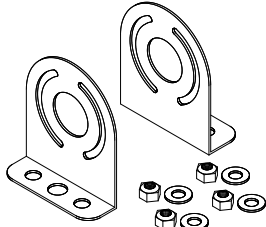
DIMENSIONS



Nominal Length	Dimensions in Inches / Centimeters						Carton W x D x L Inches		Nominal Weight	
	A	B	C	D	E1	E2	E1	E2	Lbs	Kg
2 Foot	31.5 / 80.01	30.25 / 76.84	29.25 / 74.30	25.88 / 65.72	9.0 / 22.86	6.0 / 15.24	10 x 6 x 31 $\frac{3}{4}$	10 x 8 x 32	15	6.8
4 Foot	55.5 / 140.97	54.25 / 137.80	53.25 / 135.26	36.0 / 91.44	9.0 / 22.86	6.0 / 15.24	10 x 6 x 56 $\frac{1}{2}$	10 x 8 x 56	23	10.4

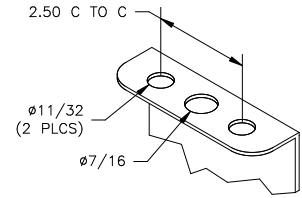
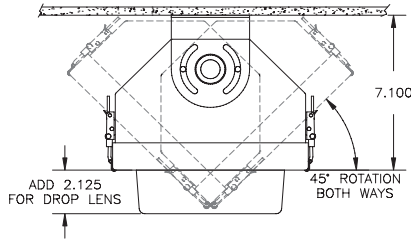
MOUNTING OPTIONS

Standard Wall/Ceiling Mounting Kit

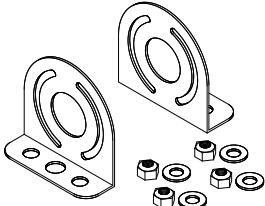


FX7027A

Standard Wall/Ceiling Mounting Kit
2 aluminum brackets and mounting hardware.
Adjustable swivel mount.

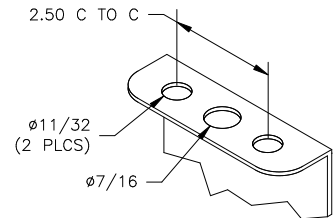
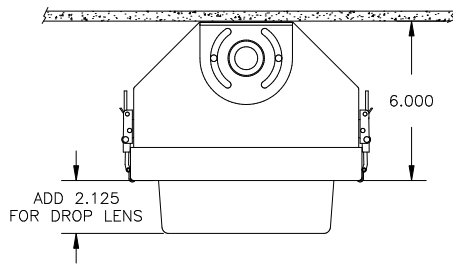


Surface Wall/Ceiling Mounting Kit

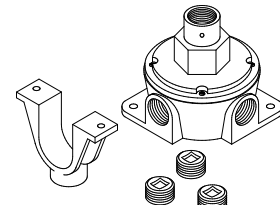
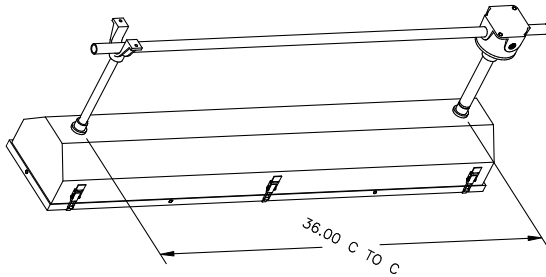


FX7022A

Surface Wall/Ceiling Mounting Kit
2 aluminum brackets and mounting hardware.
Flush mount.



Pendant Mount Kit

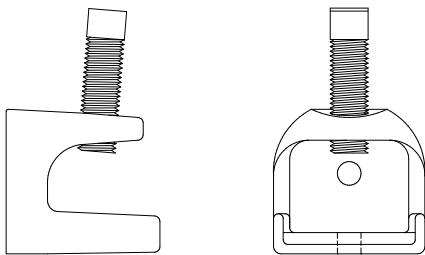


HP1095MTK

Pendant Kit
1 saddle strap and one universal aluminum junction box & cover (3/4" NPT hubs).

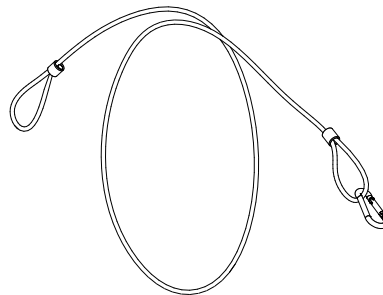
Beam Clamp Kit FX7028

Includes Beam Clamps (2), Safety Cable & Cable Gland



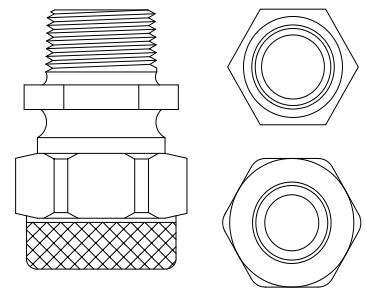
BC2K

2 Beam Clamp Kit.
For use with surface mount.



SC30H

48" stainless steel Safety Cable with snap hook.



CX1502

Cable Gland 3/4" aluminum,
cord grip range .438 - .562.